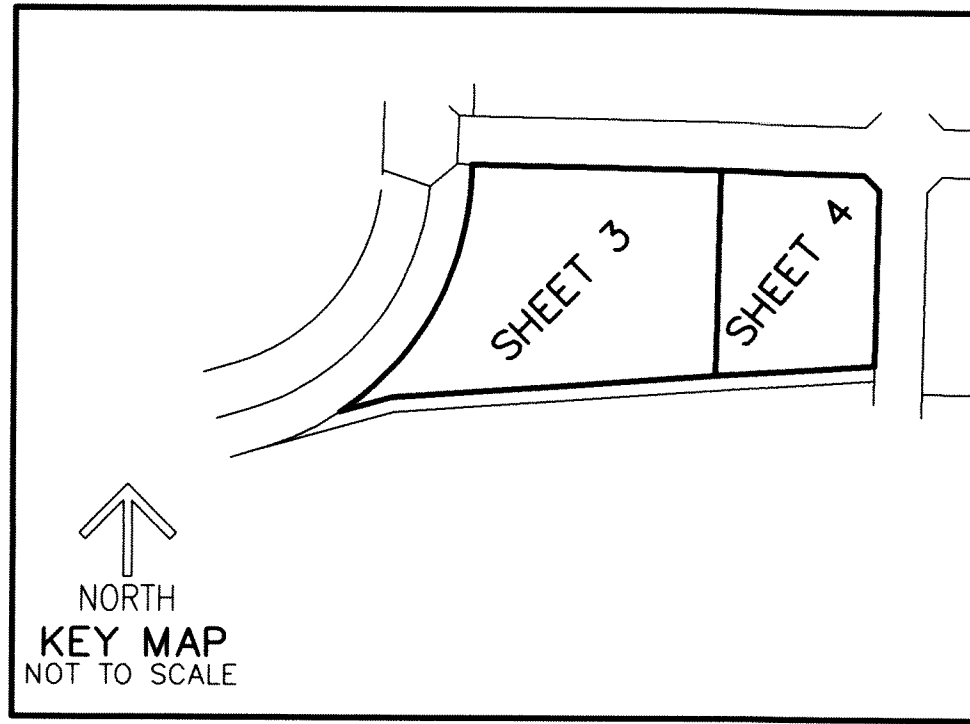


31

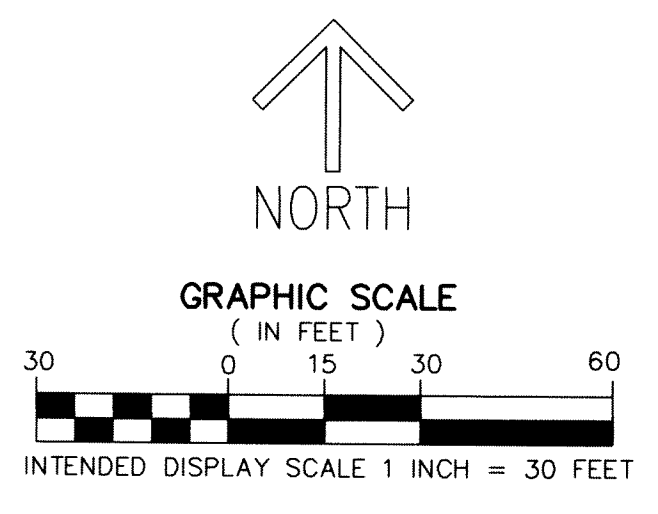
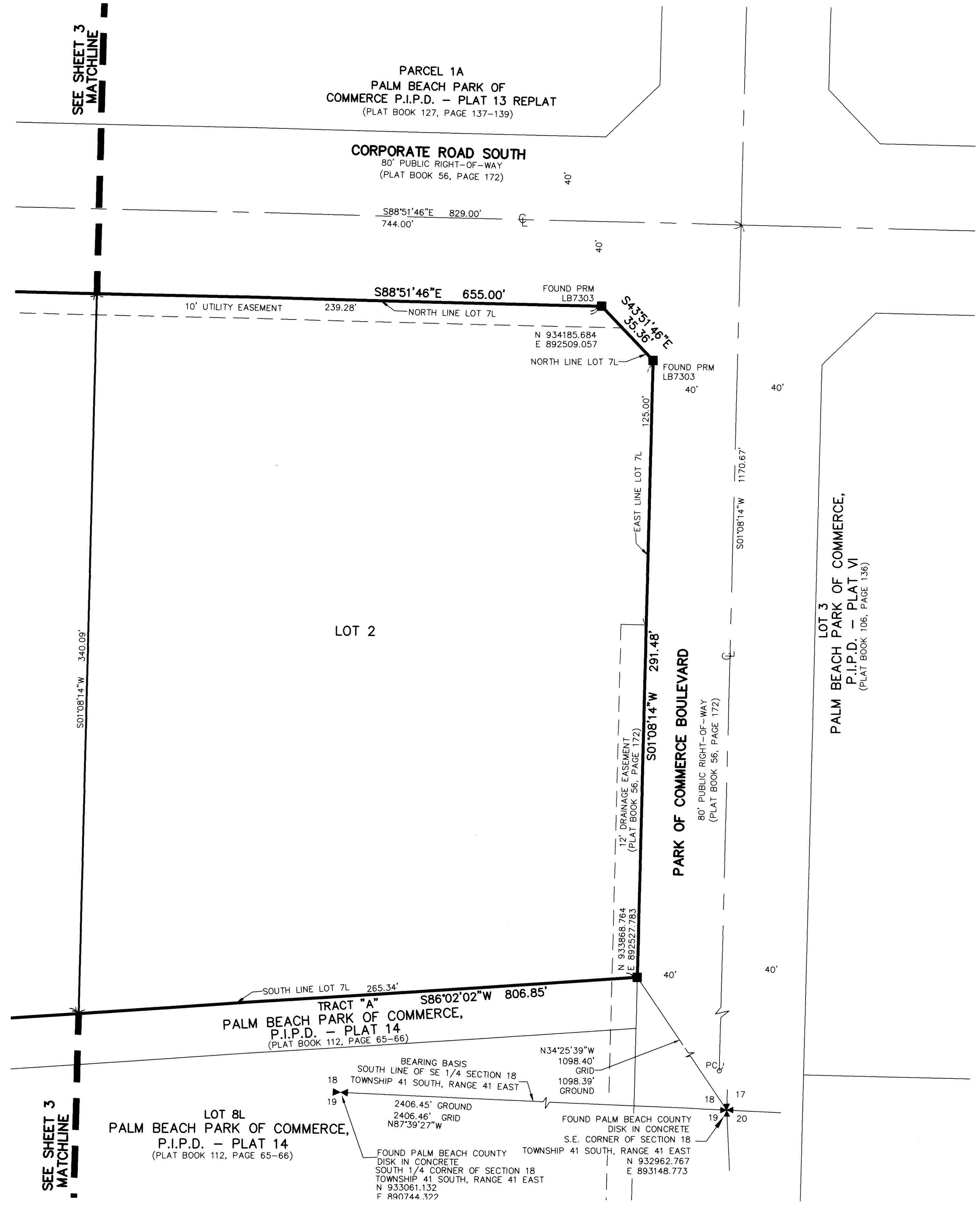
PALM BEACH PARK OF COMMERCE, P.I.P.D. - PLAT 28

BEING A REPLAT OF LOT 7L, PALM BEACH PARK OF COMMERCE, P.I.P.D.-PLAT 14, ACCORDING TO THE PLAT THEREOF AS RECORDED IN PLAT BOOK 112, PAGE 65, PUBLIC RECORDS OF PALM BEACH COUNTY, FLORIDA, LYING IN SECTION 18, TOWNSHIP 41 SOUTH RANGE 41 EAST, PALM BEACH COUNTY, FLORIDA



THIS INSTRUMENT PREPARED BY
DAVID P. LINDLEY
OF
CAULFIELD and WHEELER, INC.
SURVEYORS - ENGINEERS - PLANNERS
7900 GLADES ROAD, SUITE 100
BOCA RATON, FLORIDA 33434 - (561)392-1991

SHEET 4 OF 4



- LEGEND/ABBREVIATIONS**
- ⊖ - CENTERLINE
 - Δ - DELTA (CENTRAL ANGLE)
 - ANP - AFFECTS NOT PLOTTED
 - AC - ACRES
 - CB - CHORD BEARING
 - CD - CHORD DISTANCE
 - DNA - DOES NOT AFFECT
 - E - EASTING (WHEN USED WITH COORDINATES)
 - FPL - FLORIDA POWER & LIGHT COMPANY
 - L - ARC LENGTH
 - LB - LICENSED BUSINESS
 - N - NORTHING (WHEN USED WITH COORDINATES)
 - NPBCID - NORTHERN PALM BEACH COUNTY IMPROVEMENT DISTRICT
 - O.R.B. - OFFICIAL RECORD BOOK
 - P.I.P.D. - PLANNED INDUSTRIAL PARK DEVELOPMENT
 - PC - POINT OF CURVATURE
 - PCC - POINT OF COMPOUND CURVATURE
 - PNT - POINT OF NON-TANGENCY
 - PRC - POINT OF REVERSE CURVATURE
 - PT - POINT OF TANGENCY
 - R - RADIUS
 - SF - SQUARE FEET
 - WMME - WATER MANAGEMENT MAINTENANCE EASEMENT
 - PRM - DENOTES PERMANENT REFERENCE MONUMENT SET 4"x 4"x 24" CONCRETE MONUMENT WITH ALUMINUM DISK STAMPED "C&W PRM LB3591" UNLESS OTHERWISE NOTED

- NOTES**
COORDINATES, BEARINGS AND DISTANCES
- COORDINATES SHOWN ARE GRID
 - DATUM = NAD 83 1990 ADJUSTMENT
 - ZONE = FLORIDA EAST
 - LINEAR UNIT = US SURVEY FEET
 - COORDINATE SYSTEM 1983 STATE PLANE
 - TRANSVERSE MERCATOR PROJECTION
 - ALL DISTANCES ARE GROUND, UNLESS NOTED OTHERWISE
 - SCALE FACTOR = 1.000005579
 - GROUND DISTANCE X SCALE FACTOR = GRID DISTANCE
 - BEARINGS AS SHOWN HEREON ARE GRID DATUM, NAD 83 1990 ADJUSTMENT, FLORIDA EAST ZONE.